



Shellharbour
Marina

Responsible Boating Handbook



Table of Contents

Welcome to Shellharbour Marina.....	3
Our Environment.....	4
Water Quality.....	4
• Cleaning & Maintenance.....	5
• Marine Life & Foreshore Protection.....	9
Recycled Waste	14
Pump out Facility	15
Electrical Requirements.....	15
Marina Maps	17,18
Links and Services.....	19

Welcome to Shellharbour Marina

Whether you are a new visitor or an old friend we welcome you and hope you enjoy your stay. Shellharbour Marina is Australia's newest boating lifestyle destination located on the beautiful South Coast of NSW. Consisting of 270 berths, fuel, dry storage, vessel lifting and commercial marine services, with direct access to the NSW East Coast. The marina offers a safe harbour to enjoy boating all year round and is only 50 nautical miles south of Sydney Harbour, 30 nautical miles north of Jervis Bay, and a 2.5hrs drive from Canberra. Public boardwalks surround the marina precinct within The Waterfront, Shell Cove development. Marina clients can enjoy multiple harbour side dining options, tavern, a vibrant town centre, luxury apartments, and residential living opportunities. Future plans include a world class hotel and boat maintenance facility. Shellharbour Marina is the ideal new home for your boat and a perfect gateway to blue water adventures on the Tasman Sea.

Our Shores and ocean areas are breathtakingly beautiful, offering the water lover multiple ways enjoy, relax and have fun. It is of paramount importance to us that boaters and

clients assist with maintaining the beauty of this unique area by observing a few simple guidelines as set out in this booklet. Our staff are happy to assist you with any further information you may require. Our office hours are 8.30 am – 5.00pm 7 days. In the event of any emergency please contact the office on 4250 4100 or 0477 099 600 (24 hours).

“We invite you to enjoy all that our beautiful south coast has to offer and ask that you help us to preserve this special place by boating in a safe, fun and responsible way.” Marina Management

Our Environment

We are fortunate to be situated in such an extraordinary place and Marina Management take any potential environmental impacts extremely seriously. Please familiarise yourself with the Marina Berth Agreement, including the ‘Terms and Conditions’ and ‘Rules & Regulations’, as these comprise your legal obligations as well as some common courtesies for all of the Shellharbour Marina community.

Water Quality

We conduct regular water monitoring in and around the marina. We need to ensure that our only impacts are

beneficial, and as a result, we ask that you assist us by ensuring your bilge is clean, you use the onsite facilities for waste removal and the bathroom and laundry amenities when staying onboard your vessel at the marina and to please be aware of what goes into the water at all times.

Always be aware of your prop wash - ensure that you do not stir up sediments or create waves that can damage the foreshore or cause nuisance to others around you.

Big or small, basic or customized, it's easy to forget that your boat is a vessel that requires constant care and attention. Fortunately, routine maintenance and small repairs aren't that tough. In the long run, a little elbow grease will definitely pay off plus help retain your boats value. Remember first impressions count!

Cleaning & Maintenance

Greywater is the soapy water from the boat galley sinks and showers and can be used to describe the dirty rinse water created when washing a boat. The environmental impact of greywater can be significant if harsh soaps and chemicals are used. The simplest task is to “wash your boat regularly”. Rinse your boat thoroughly with fresh water after every outing to remove salt residue. Salt will not only corrode metal, fasteners and other hardware, it will remove the shine from your gelcoat. Use a long-handle, soft-bristle boat brush and some

PH Neutral, environmentally safe boat soap and don't forget to rinse well. Check with the marina office for suitable products and further information.

Non-Toxic Cleaning Alternatives – Source Marina Industries Association “Clean Boaties Factsheet” The following list provides non-toxic alternatives to typical cleaning products. Please note that even non-toxic substances can cause harm to the environment so use sparingly.

- When cleaning, always try water and a little elbow grease first
- All purpose cleaner: mix one cup white vinegar with five litres of water
- Air freshener: an open box of baking soda
- Ammonia-based cleaners: vinegar, salt, and water
- Brass cleaner: Worcestershire sauce or paste made with equal amounts of salt, vinegar, and water
- Copper cleaner: lemon juice and water or paste of lemon juice, salt, and flour
- Chlorine bleach: baking soda and water or borax
- Chrome cleaner/polish: apple cider vinegar to clean; baby oil to polish
- Disinfectants: one half a cup borax in three litres of water
- Drain opener: disassemble and use a plumber's snake or flush with boiling water mixed with one-quarter cup baking soda and one quarter cup vinegar
- Fibreglass stain remover: baking soda paste
- Floor cleaner: one-cup vinegar plus five litres of water
- Paints: use latex or water-based paints
- Paint remover/stripper: use heat gun to peel off paint
- Paint thinners: use water (effective for water-based paints)
- Stainless steel cleaner: baking soda or mineral oil for

polishing, vinegar to remove spots • Toilet bowl cleaner: use toilet brush and baking soda • Wood polish: olive or almond oil (interior walls only) • Window cleaner: mix two tablespoons vinegar in one quart of water or rub glass with newspaper

Bilges/Engine Rooms

The truth is that you do have to engage in regular maintenance on your boat. Remember that only minor repairs can occur on the marina berth. If you are in doubt, please contact the Marina Office. The bilge might not be the first thing that comes to mind when you think of the things you need to clean on your boat, but it can easily become one of the nastiest places on board. The most important reasons to keep your bilge clean are: • to prevent growth of bacteria • eliminate foul odours • prevent rust and corrosion of equipment that lies in the bilge Identify leaks and Please don't ignore them. Oils from the engine or steering system if leaking can make their way to the bilge and overboard via the bilge pump. To ensure any oils in the bilge are captured a Bilge Sock or oil absorbent pad should be in place to collect environmentally damaging oils. Ensure bilge sock or pad is positioned in a way as not to foul bilge pump and/or bilge pump switch.

Engine Oil

Most new model boats have drip pans installed under the engines to prevent oil from dripping directly into the bilge. Whether you have drip pans or not it is a good idea to put absorbent pads under the engines. They not only absorb the oil that could drip but provide a quick way to find leaks. Absorbent pads are available from the Marina Office. Each time you do an engine check, which should be each time prior to starting, check the pad to see if any new oil spots have appeared. If so, try to track down the source immediately.

What You Can Do: You should inspect the bilge and its surroundings with a flashlight at least once a month. Look for the following:

- Lift up the float switch on your electric bilge pump to make sure it turns on the pump automatically
- If you find unusual amounts of water, be sure to track down the source
- Check all through-hull openings and fittings
- Make sure that all fittings below the waterline have double hose clamps
- Check the seacocks to make sure that you can turn them off. You could sink your boat if a hose comes loose from a seacock and you can't stop the flow of water because the valve is corroded
- Look for corrosion and rust
- Check for unusual growth or mildew
- Check all pipes, hoses and clamps

Don't Pollute: Remember that it is illegal to pump oily discharge overboard. If you find oil in your bilge water turn off the bilge pump and immediately contact the marina office to

assist with the disposal of any oily water. Don't think just because there is only a little bit of oil it is okay. For small amounts of oil, use bilge pads to soak the oil up, place the used pads in a sealed bucket and bring it to the marina office for disposal. Don't pump effluent into the marina or harbour. Our marina has a sewage pump out facility at the fuel wharf to deal with your effluent tank. The pump out facility connects to the general sewerage lines and is therefore not for oily water waste. Please contact the Marina Office for assistance.

Marine Life & Foreshore Protection

Coastal Waters have an abundance of marine and bird life. Threats to marine life include but not limited to plastic bags and other waste mistaken for jellyfish, cigarette butts, waste fishing line and hooks, boat and propeller collision, entanglement and drowning in nets, ropes, floats and traps, habitat destruction, poor water quality, deliberate acts of cruelty, disease, feeding fish or birds, cleaning fish in the marina basin and as users of these waters it is our responsibility to ensure the protection of our environment.

What You Can Do ✓ Appropriately dispose of your rubbish ✓
Collect litter on or adjacent to the harbour ✓ Report people

engaging in illegal netting or trapping ✓ Assist coastal health projects ✓ Join your regional animal rescue and care group ✓ Report sick or injured marine life Green, Loggerhead and Flatback turtles, seals, penguins and dolphins are known to occur in our harbour. Our coastal waters are a migratory path for whales heading north and must be respected and safe distances must be kept to ensure their safe passage.

Whales, dolphins and dugongs

Powerboats, sailing boats and paddlecraft must keep a minimum distance from whales of:

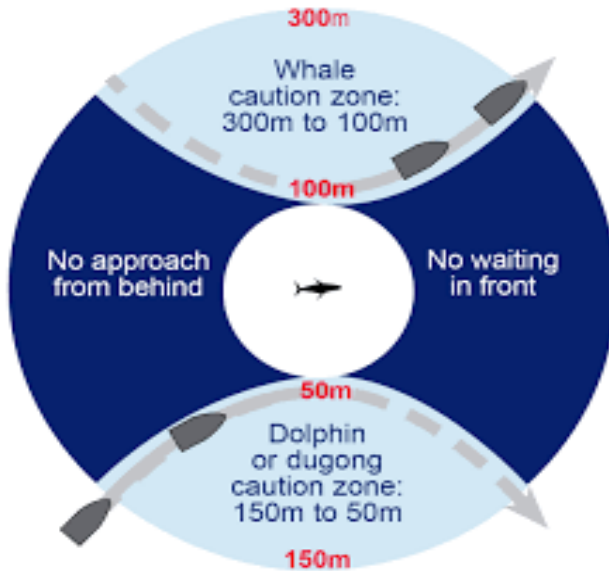
- **100m**, or
- **300m** if there are calves.

You must travel at a constant slow speed and leave minimal wash within **300m** of whales.

You must keep a minimum distance from dolphins and dugongs of:

- **50m**, or
- **150m** if there are calves.

Shellharbour Marina encourages all who use the waterway to be aware of and respect marine wildlife.



Summary

- **Be Aware**

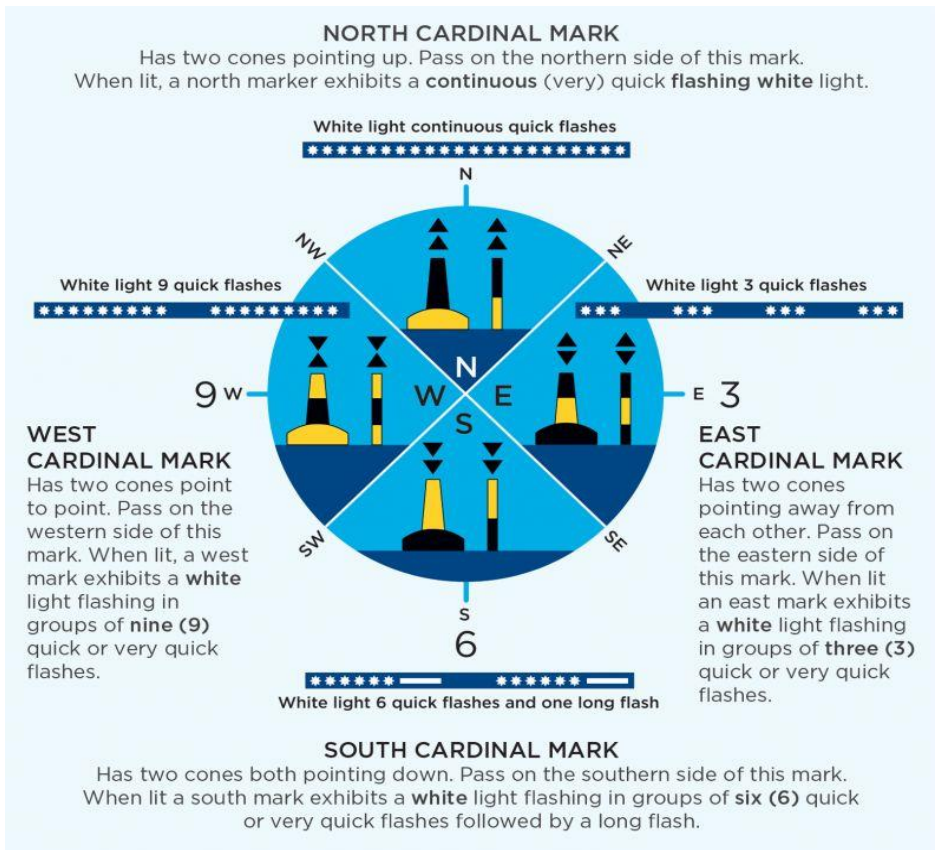
Protect your environment by using ecofriendly cleaning products, less chemicals used in our marinas will help to prevent any build-up of toxins.

- **Read the Waters**

Wear polarised sunglasses when boating to reduce surface glare and can also help you see and avoid any underwater hazards and marine life.

- Know your Boating Signs and Markers

Operate your boat in marked channels to prevent running aground and damaging your boat. Know the correct side to stay on when approaching channel markers and navigational marks. Learn the shapes and markings of navigational markers and signs warning boaters of dangerous shallows and areas where boats are prohibited by law. Always observe speed signage.



- **Know your Depth and Draft**

When in doubt about the depth, slow down and idle. Tilt or stop your engine if necessary. If you run aground, pole or walk your boat to deeper water. Never try to motor your way out. This may cause extensive damage to your motor. Know the times for your low and high tides.

- **Be on the Lookout**

When your boat is underway, always keep a sharp lookout ahead of you and be aware of your surroundings. This will keep you and your passengers' safe, as well as marine animals out of danger.

- **Be Considerate**

Never pump your oily bilge water or effluent out into the marina or harbour. Shellharbour Marina has a Pump out facility for your sewerage situated at the fuel wharf. It is good practice to Pump out after each trip.

- **Study your Charts**

Use navigational charts, fishing maps, or local boating guides to become familiar with waterways. These nautical charts alert you to shallow areas so you don't run aground and damage your vessel or environment. **Know before you go.**

Recycled Waste Management

Shellharbour Marina provides recycling facilities for waste generated at the marina. The Comingle Recycling (yellow lid) bins are clearly signed for the type of waste accepted. Please see the marina office if you have any special requirements or need assistance to remove your waste appropriately.



Emergency Spill. Recycling Bins located at the end of the Main Gangway Entrance. General waste (red lid) bins also provided.



Oil Spill Equipment

Emergency spill equipment is available on each marina arm and the fuel wharf. Any large oil or fuel product spill should be reported immediately to the marina office 4250 4100 or afterhours 0477 099 600. Used absorbent materials need to be disposed of correctly and should not be placed in the general waste bins. Used absorbent material should be placed in bags and marina management will handle disposal of these waste materials.

Vessel Sewage

Pump out – Sewerage Waste unit located @ the Fuel Wharf. Marina staff can be contacted on 4250 4100 to assist in the operation of the sewage pump out unit.

Electrical Requirements

Unlike household electrical wiring, the wiring and equipment on board your vessel resides in a corrosive marine environment that requires regular inspection and maintenance. Every time you connect to shore power, take a good look at the lead and fittings. If you see any evidence of damage, corrosion, water ingress or arcing please notify the marina office immediately. We will organise our electrician to

investigate and rectify any problem. Always turn off the breaker on the pedestal before removing or plugging in your power lead. This will prevent any arcing of the power socket. When connecting the plug and socket make sure the locking ring is always secured to ensure protection from the weather. Always ensure the power lead is arranged so it will permit normal movement of the boat at the berth without placing undue stress on the shore power lead and pedestal through rubbing or chafing. Check lead for any damage regularly. Please arrange the lead in such a way that it cannot present a trip hazard to others walking the marina, utilise cable track and that it cannot drape into the water. Please do not coil the lead around the power pedestal.



Marina Spill Kit, General Waste & Recycling Locations

Inner Harbour



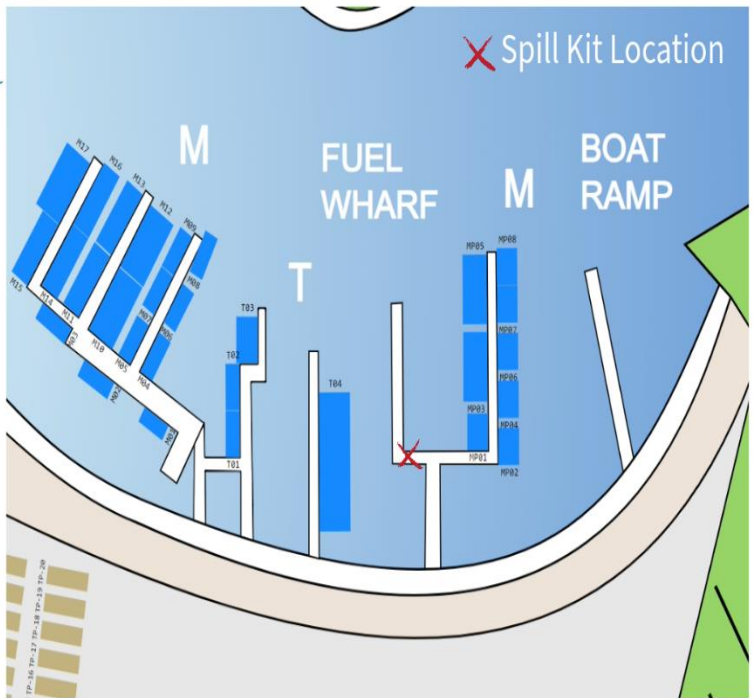
Spill Kit Locations & General Waste & Recycling Locations



Outer Harbour



Spill Kit Locations & General Waste & Recycling Locations



Links & Info

Emergency Contacts

MARINE RESCUE Shellharbour 02 4296 2640 or 0428853860

POLICE /FIRE/AMBULANCE 000

Australian Search & Rescue Maritime – 1800 641 792

WILDLIFE RESCUE WIRES – 1300 094 737

Boating Safety Officer Port Kembla – 0477 981 367

EPA Environment Line – 13 15 55

SHELLHARBOUR MARINA

Marina Office 4250 4100 8.30 am – 5.00 pm 7 days

Dockmaster – 0492 492949

Fuel - 8.30am – 4.30pm – 4250 4100

Manager – 0477 099 600

Emergency After Hours – 0477 099 600 Or 0421 235 848

Address: 13 Marina Drive, Shell Cove NSW 2529

admin@shellharbourmarina.com.au

www.shellharbourmarina.com.a